



COLORADO RIVER HISTORICAL SOCIETY & MUSEUM NEWSLETTER

VOLUME 1 NUMBER 3

AUGUST 2020



River Queen Motel Stain Glass

The stain glass was originally installed in the River Queen Motel on 7th Street in Bullhead City. It provided a separation wall between the Restaurant and Bar area. Although, no one remembers the artist who constructed the Stain Glass, some other examples of the same work can be seen just outside the Gourmet Room in Don Laughlin's Riverside Casino in Laughlin, Nevada.

When the River Queen Motel property was sold as part of the Laughlin Ranch Property sale and the motel was scheduled to be demolished. The Bullhead City Fire Department was allowed to do training inside the old motel prior to the destruction and Duane Leisle a Captain with the Fire Department asked the contractor

VOLUNTEER

The Colorado River Historical Society and Museum is a 501 © (3) non-profit organization dedicated to the preservation of the history of Bullhead City and the Tri-state areas. We are staffed entirely by volunteers, and we are always looking for a few more reliable volunteers. If you are interested in helping in any way, please give us a call at 928-754-3399 or email us at: crhsmuseum@outlook.com. We would love to have you on our team.

HOURS OF OPERATION

Due to the Covid-19 outbreak and the restrictions placed by the Governor of Arizona, we have chosen to keep the museum closed to the public throughout the summer months for the protection of our volunteers and the general public. We will tentatively reopen sometime in September with some great new displays and exhibits. We will keep you informed as we draw closer to the time we will reopen. We wish you a fun and safe summer. We hope to see you in September!

what would happen to the stain-glass? He was told that it would be bulldozed along with the other walls as it was too big and heavy to be moved. Duane then asked if he could get it out of the wall, could he save the glass from the bulldozer? The contractor said “sure.”

So, for years after the River Queen was demolished the stain-glass remained in storage and waited for a time when it could be displayed again.

Duane Leisle donated this fabulous piece of art that has long been a part of Bullhead City, Arizona history to the Colorado River Museum, and with Larry Adams, provided the back lighting, frame and installation.

We can hardly wait to show it off!

DONATION GUIDELINES

What we are looking for is any artifact that is pertinent to our Tri-State area. This includes but is not limited to photographs, family histories, military activity, Davis Dam, Native Americans, steamboats, ranching, fossils, explorers, highways, historical maps, churches and service clubs, businesses, and mining.

Please keep in mind these are the guidelines we use if you choose to donate an artifact in your possession:

- Is it of museum quality?
- Is it pertinent to our area of interest?
- Do we already have as good or a better prime example of the artifact?
- Does the provenance of the artifact or material increase its significance?
- Is the donor the legal owner of said materials?
- Do we have enough volunteers to maintain it, i.e. clean, oil, repair it, and can we provide the correct environmental conditions to preserve the materials?
- Do we have adequate space to store it?
- Do we have adequate space to display it in the foreseeable future?
- We cannot accept an artifact with stipulations on it such as it must be displayed in a particular way or time period.
- We do not accept loans.

Give us a call at the museum if you have an artifact or historical item you would like us to consider!

THE PRESIDENTS CORNER

I hope the dog-days of summer are finding you all healthy and happy. It is an interesting time in our history that we find ourselves, one we have never experienced before. I am sure it will go down in the annals of time as either the best of times, or the worst of times, depending on your prospective.

We continue our efforts of working behind the scenes to make our museum a showcase for the fabulous history of Bullhead City and the surrounding areas and so look forward to the time we can reopen and see all of you again.

I want to thank all of our loyal volunteers and members for your dedication and patience in your support of the museum during our extended closure. You are living history, and I want you to know that I so appreciate each and every one of you!

Karole Finkelstein

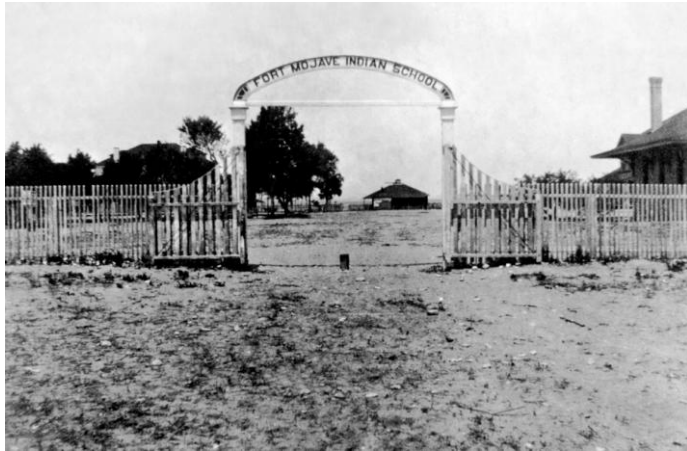
BOARD OF DIRECTORS

Karole Finkelstein – President
Elsie Needles – Vice President
Carla Lucas – Treasurer
Brenda Warneka – Secretary
Jeanette Miller – Director
Ralph Patterson – Director
Dick Warneka – Director

OTHER NEWS

Please begin using our **NEW** email:
crhsmuseum@outlook.com

FORT MOHAVE



Quote from Minnie Braithwaite Jenkins book *The Girl From Williamsburg* documenting her first sight of Fort Mojave Indian School in 1901:

“ The fort was built in a square, the barracks and the storerooms on one side, officers’ quarters on the other; at the end toward the road were the jail, office, and assembly hall; at the other end, were the superintendent’s cottage, the water tower, the bathhouse, and back of these the engine house and additional barracks.

At this time the barracks were used for school rooms and dormitories, while the employees occupied the cottages that had been officers’ quarters. A row of stunted pepper trees extended around the parade ground. Near the middle was the flag-pole, from which flew a large American flag, and near the flag-pole was the band stand.

Below the high mesa upon which the Fort stood was the rushing, roaring Colorado, which could be plainly heard. I could see, on the other side, the old emigrant trail that the forty-niners had had to climb after fording the river. It was at the crossing that the Indians always attacked. This was the place where Lieutenant Beale had crossed with his first camel train and, as I looked at it, I pictured that crossing, with the camel drivers yelling at the animals and forcing them to enter and ford the river.

First a military fort, when it was no longer needed the soldiers were withdrawn and the Fort turned into a school.”

ARCHIVAL COMMITTEE

Cheryl Mangin – Archivist
Richard Dotson – Asst. Archivist
Carla Lucas – Member
Jim Lucas – Member
Laurie Thompson – Member

ARCHIVAL COMMITTEE ACTIVITY



Rich Dotson and Jim Lucas installed our 7 new bookcases in our reference library. The committee will soon be inventorying our books and will get those shelves loaded. (Shelves not pictured.) Thanks again to Paul Varner for the great coloration applications.

Carla Lucas and Laurie Thompson are still working on the inventory of our artifacts, completing new data cards, photographing items and logging them in. Very soon we will know exactly where our holdings are at any given minute.

All of our display cabinets have been rekeyed, or had new locks installed to assure that our artifacts remain safe when the visiting public returns.

Next week the museum will be having new window blinds installed. These were donated to us by a local company. More on this next time.